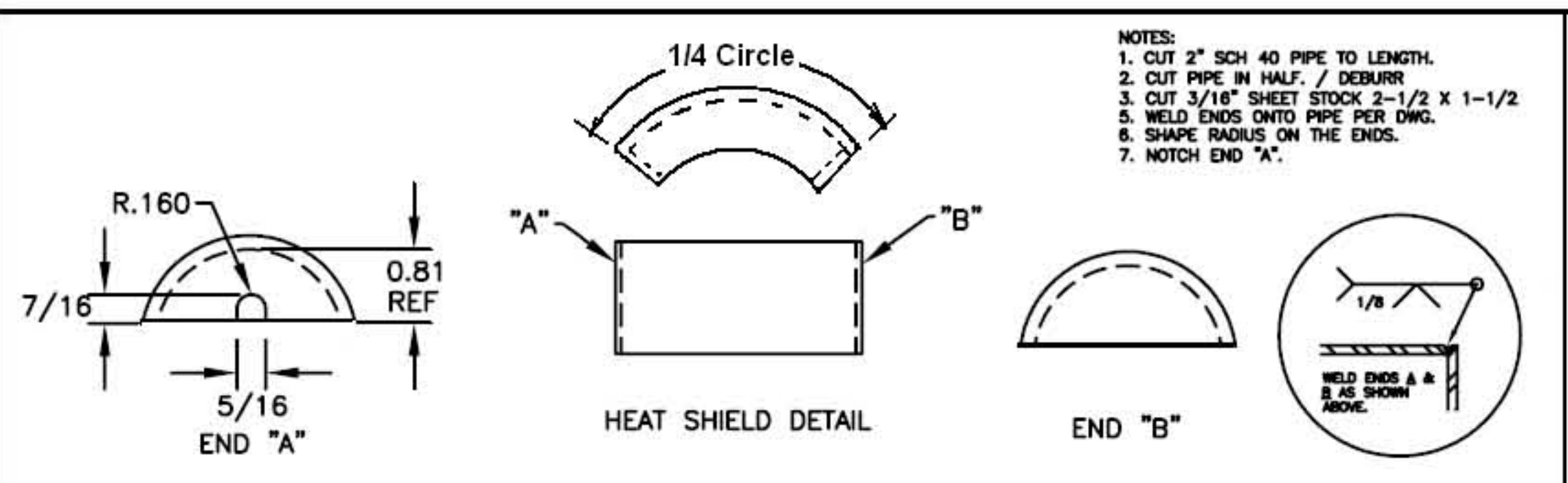


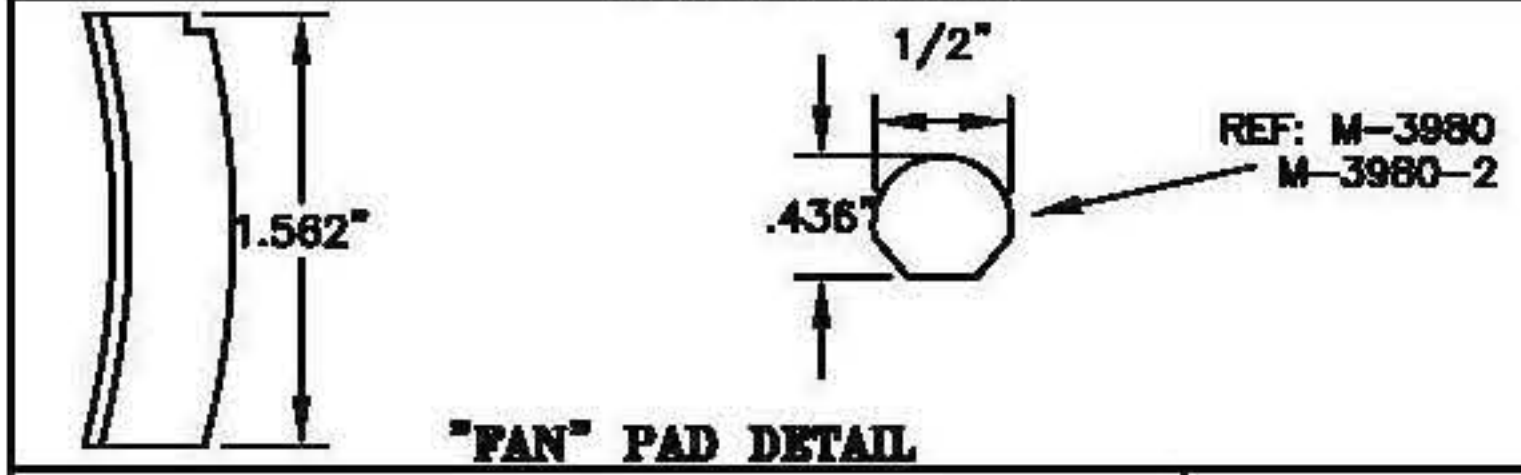
FITTING DETAIL



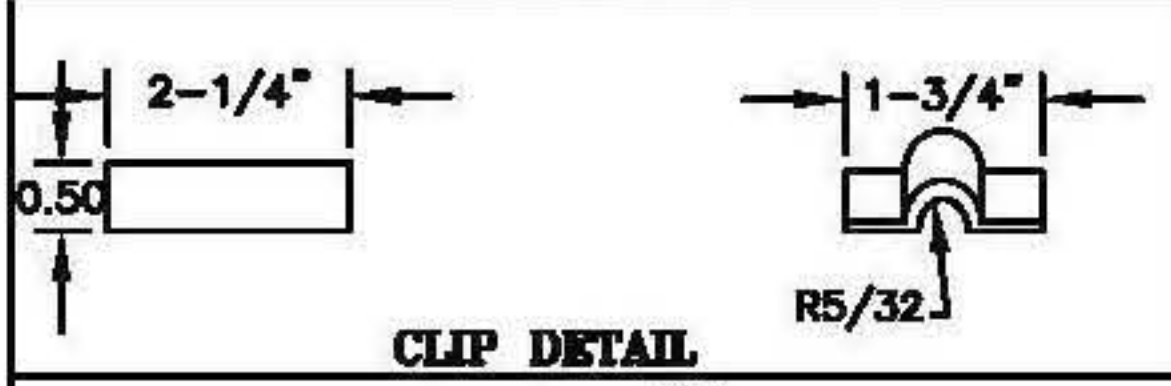
HEAT SHIELD DETAIL

END "B"

NOTES:  
 1. CUT 2" SCH 40 PIPE TO LENGTH.  
 2. CUT PIPE IN HALF. / DEBURR  
 3. CUT 3/16" SHEET STOCK 2-1/2 X 1-1/2  
 5. WELD ENDS ONTO PIPE PER DWG.  
 6. SHAPE RADIUS ON THE ENDS.  
 7. NOTCH END "A".



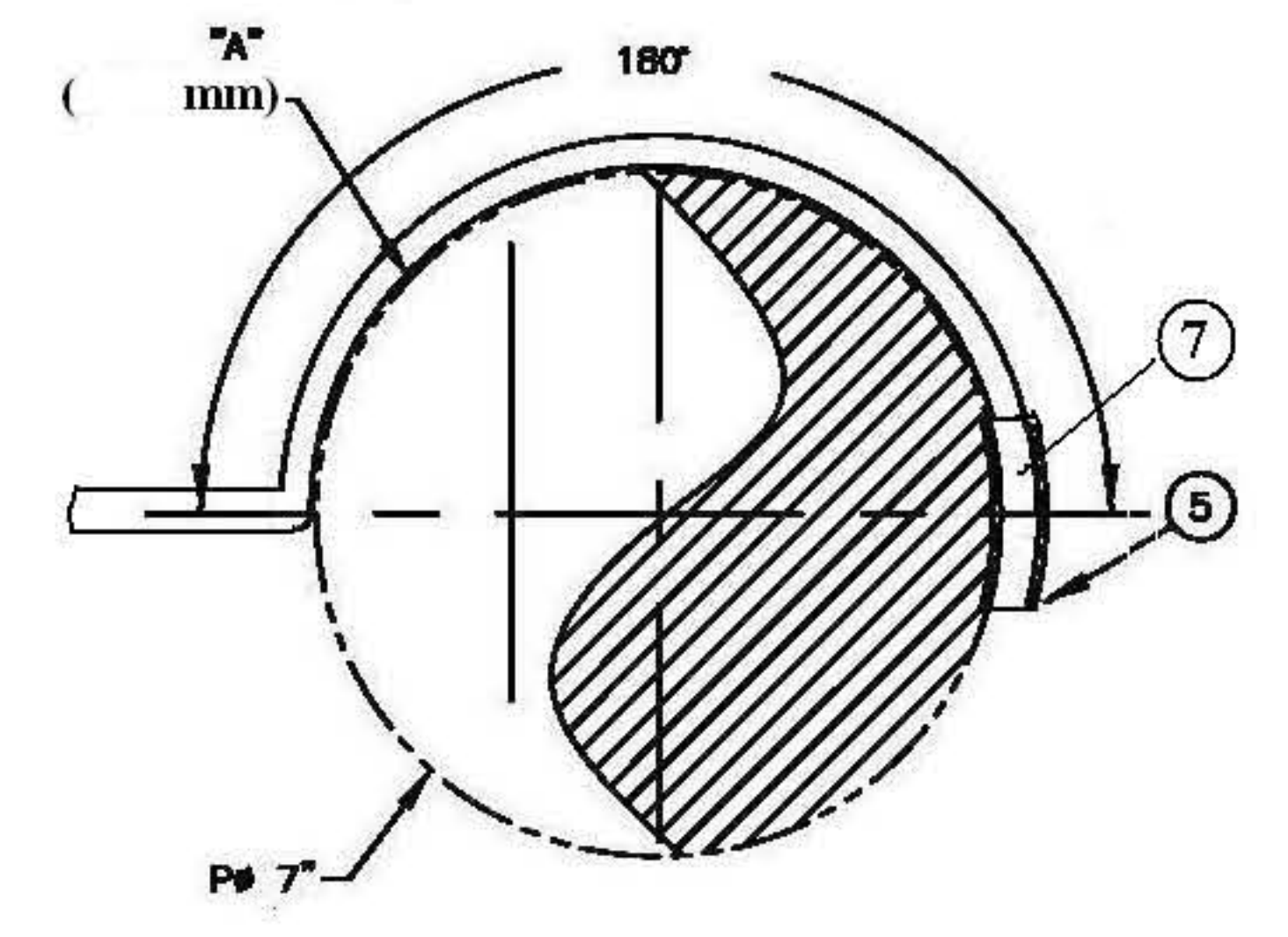
"FAN" PAD DETAIL



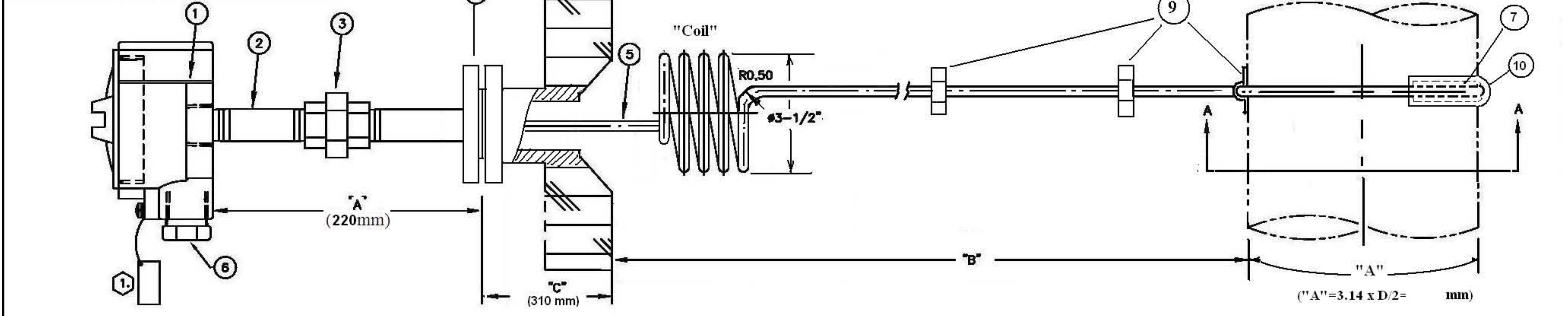
CLIP DETAIL

NOTES:

- 1. EACH UNIT TO BEAR TAG NUMBERS ENGRAVED ON S.S. TAG ATTACHED WITH S.S. WIRE.
- 2. GUA SERIES HEADS ARE RATED:  
 PER: NBC/CEC - CLASS I, DIVISION 1 & 2, GROUPS C & D  
 CLASS II, DIVISION 1, GROUPS E, F, & G  
 CLASS II, DIVISION 2, GROUPS F, G  
 CLASS III  
 UL STANDARD: 886, ANSI STANDARD: C33.21  
 CSA STANDARD: C22.2 No. 30  
 NEMA / KEMAC 3,4 IP 65/66



SECTION A-A



Item	Q'ty	Tag Numbers	"A"mm	"B"mm	"C"mm	Overall Length mm
1			220		310	L=
2			220		310	L=
3			220		310	L=
Note	"L" Overall Length = "A" + "B" + "C"					

- 1. Four clips shall be provided for each thermo-couple
- 2. The "Coil" shall be at least 4 turns with the diameter 3-1/2"
- 3. The overall length of the thermo-couples shown in the left table

TERMO-COUPLE SPECIFICATIONS

CALIBRATION : A.N.S.I. TYPE "K" (CHROMEL / ALUMEL)  
 ACCURACY : A.N.S.I. STANDARD LIMITS OF ERROR  
 INSULATION : COMPACTED MgO  
 ELEMENT  
 STYLE : SINGLE [1 PAIR]  
 SHEATH : .250 #,  
 JUNCTION : UNGROUNDED  
 COLOR CODE : POSITIVE- YELLOW- (CHROMEL)  
 NEGATIVE- RED- (ALUMEL)

PARTS IDENTIFICATION

- 1 GUAB-26
- 2 3/4" NPT SCH40 NIPPLE x 3" LONG
- 3 3/4" UNION
- 4 1-1/2" ANSI 150# or 300# RF FLANGE
- 5 METAL SHEATH THERMO-COUPLE
- 6 3/4" x 1/2" REDUCING BUSHING
- 7 KNIFE EDGE WELD PAD
- 8 1/4" NPT x 1/4" COMPRESSING FTG.
- 9 RETAINING CLIP (SEE DETAIL)
- 10 HEAT SHIELD

- AL
- CS
- CS
- CS
- SEE SPECS.
- AL
- SEE SPECS.
- SEE SPECS.
- SEE SPECS.

REFERENCES

LEAD-SAIL IND. LTD.  
 P.O. NO.: LS05022

THIRD ANGLE PROJECTION :

DUAL DIMENSIONS : MM (M) / IN (I)

TOLERANCES UNLESS OTHERWISE SPECIFIED:  
 FRACTIONS: .015 DECIMALS: .005 ANGLES: ±1°

MATERIAL:

FINISH:

THIS DRAWING IS THE PROPERTY OF THERMO-COUPLE PRODUCTS COMPANY AND SHALL NOT BE REPRODUCED OR TRANSMITTED IN ANY FORM OR BY ANY MEANS WITHOUT THE WRITTEN PERMISSION OF THERMO-COUPLE PRODUCTS COMPANY.

THIRD ANGLE PROJECTION :

SCALE: NOT TO SCALE

DATE: 3/21/08

DATE: 3/22/08

DATE: 3/22/08

SCALE: NOT TO SCALE

DRG NO: M-4034

REV

THERMO-COUPLE PRODUCTS COMPANY  
 NEWELL WEST VIRGINIA

TITLE: 1/4" TUBE SKIN-FAN TYPE T/C  
 USAGE: LEAD-SAIL INC.