

**THERMOCOUPLE SPECIFICATIONS**

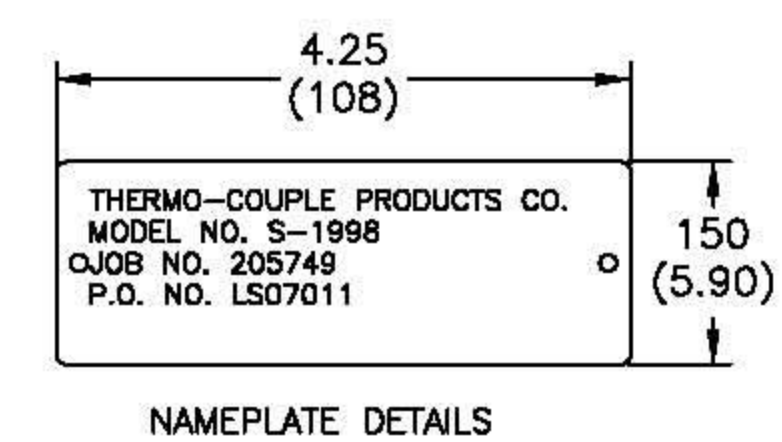
**CALIBRATION:** A.N.S.I. TYPE "K"  
**ACCURACY:** A.N.S.I. SPECIAL LIMITS OF ERROR  
**INSULATION:** COMPACTED MgO  
**ELEMENT**  
**STYLE:** DUPLEX [TWO PAIR]  
**SHEATH:** 4,7(.187)Ø, 316 SS  $\Delta$   
**JUNCTION:** UNGROUNDED  
**COLOR CODE:** POSITIVE- YELLOW- (CHROMEL)  
 NEGATIVE- RED- (ALUMEL)  
**LEADWIRE:** 16GA SOLID CONDUCTOR, TYPE "K" EXTENSION GRADE, PVC INSULATION ON INDIVIDUAL WIRES, NYLON JACKET OVERALL - CONTAINED IN 3/8" FLEXIBLE PVC COVERED ELECTRICAL CONDUIT

**PARTS IDENTIFICATION**

- |   |  |
|---|--|
| <ul style="list-style-type: none"> <li>(1) THERMOWELL TUBES - 15,9(.625)O.D. X 3,4(.134) WALL</li> <li>(2) M-4119 WELL SPACERS</li> <li>(3) 4", 600 LB., RF, BLIND FLANGE, 125-250 RMS</li> <li>(4) ST304 SERIES SEALANT GLAND FITTING W/LAVA SEALANT</li> <li>(5) SUPPORT BRACKET</li> <li>(6) THERMOCOUPLE</li> <li>(7) 106 SERIES WATERPROOF CONNECTOR ASSY.</li> <li>(8) JUNCTION BOX (COR.TEM #CCA-02) SEE NOTE 6.</li> <li>(9) NAMEPLATE</li> </ul> | <ul style="list-style-type: none"> <li>- 316H SS</li> <li>- 316SS</li> <li>- 316H SS (.04 MIN CARBON CONTENT)</li> <li>- 303SS/304SS</li> <li>- 303SS/304SS</li> <li>- SEE SPECIFICATIONS</li> <li>- 303SS/304SS</li> <li>- ALUMINUM ALLOY</li> <li>- STAINLESS STEEL</li> </ul> |
|---|--|

- NOTES:**
1. THERMOCOUPLE TIPS TO BE X-RAYED & DYE CHECKED.
  2. ALL WELDS TO BE DYE PENETRANT CHECKED.
  3. CONNECTORS TO BE CHECKED FOR POLARITY AFTER ASSY.
  4. THERMOCOUPLES TO BE CHECKED FOR CONTINUITY FROM TERMINAL STRIP, AFTER ASSY.
  5. INTERNAL HYDROSTATIC PRESSURE TEST SHALL BE PERFORMED ON THERMOWELLS AT 1-1/2 TIMES THE FLANGE RATING.
  6. JUNCTION BOX COMPLIES TO Eex d IIC T5 - IP66
  7. "316H SS" IS TO BE STAMPED ON EACH THERMOWELL APPROXIMATELY 3" BELOW THE FLANGE.
  8. 30 SPARE LAVA SEALS ARE TO BE SUPPLIED WITH ASSEMBLY.

See SHT 2/3 FOR TAG NUMBERS



**FOR APPROVAL**

DATE: 7/25/07 BY: MG  
 JOB NO: 205749  
 P.O. NO.: LS07011  
 THERMO-COUPLE PRODUCTS CO.

REVISIONS

REV	DATE	DESCRIPTION	BY
A	7/25/07	T/C SHEATH WAS: 316H IS: 316	MG

TOLERANCES UNLESS OTHERWISE SPECIFIED: FRACTIONS: ±1/64 DECIMALS: ±.005 ANGLES: ±1°		THERMO-COUPLE PRODUCTS COMPANY	
MATERIAL:		NEWELL	WV
FINISH:		TITLE: 6 POINT MULTI-THERMOWELL ASSEMBLY	
THIS PRINT IS OF A CONFIDENTIAL NATURE AND IS THE PROPERTY OF THERMO-COUPLE PRODUCTS CO. AND SHALL NOT BE TRACED, PHOTOGRAPHED OR REPRODUCED IN ANY MANNER NOR USED FOR ANY PURPOSE WHATSOEVER EXCEPT BY WRITTEN PERMISSION OF THERMO-COUPLE PRODUCTS CO.		USAGE: LEAD-SAIL (B.J.) INDUSTRIAL Ltd. BEIJING, CHINA	
SCALE: NOT TO SCALE	DRAWN BY: MG	DATE: 7/19/07	DWG NO: S-1998 SHT 1/3 REV $\Delta$